



Workplace Giving



Acknowledgement of Country

Yalari acknowledges Aboriginal and Torres Strait Islander peoples as the first inhabitants of this land. We recognise their culture, history, diversity and deep connection to land, waters and territorial seas of Australia.

We pay our respects to the Elders, past and present, and acknowledge the Yalari office is on Kombumerri country within the lands of the Yugambah language group of the wider area. We also acknowledge the traditional custodians of the lands on which we work Australia-wide, and recognise their culture, heritage and beliefs.

Vision

Yalari's vision is to be one of Australia's great enduring educational and leadership foundations empowering Indigenous people from regional and remote Australia.

Purpose

To create equitable opportunities and outcomes for successive generations of Indigenous children.

To develop leading programs educating and supporting Yalari's students and alumni, individually and collectively, as qualified, contributing, culturally connected and influential Australians.

To honour all Australians by sharing Indigenous cultures through stories, healing, laughter and truth.

Our CORRIE Values

Compassion Openness Respect Resilience Inclusiveness Excellence



The Impact of Workplace Giving

Workplace giving is a simple and tax effective way for employees to make donations to a cause they care about. These donations help Yalari educate and empower Indigenous students from remote and regional Australia.

Make a Difference

Workplace giving allows employees to provide life-changing educational opportunities for Indigenous students from remote and regional Australia by making a regular, tax-deductible donation to Yalari through your employer's payroll system.

Convenient

You don't need to collect and present receipts to claim at the end of the year for a tax refund. The donation is taken from your employee's pre-tax salary, and the donation is automated with their payroll cycle.

Tax Effective

Donating from your employees pre-tax income means a lower upfront cost for them, as the tax benefit applies immediately.

Improves Workplace Culture

Workplace giving brings staff together around a common cause. Many employers choose to match staff donations or donate a fixed amount, to increase the impact and boost staff morale.

"I'm a big believer in the power of education and its ability to open up important opportunities for children. Workplace giving is an easy way for me to know that each month my contribution is making an impact."

Todd, Workplace Giving Donor



How to Set Up Workplace Giving



Workplace giving platform

Using a platform provides an easy to navigate and streamlined process for your payroll team and staff.

Staff are able to create accounts, choose a charity and donation amount and manage their contributions themselves.

You can find Yalari already on the platforms below, and one of our Philanthropy team are happy to point you in the right direction to help get your team set up.

good2give

catalyser

goodcompany

benevity



Direct Deposit

You can set up your workplace giving program internally through regular bank transfers that coincide with your pay cycle.

For assistance with this, we suggest visiting [Workplace Giving Australia](#) or [1 Million Donors](#).

In order to set up a bank transfer, please [email us](#) or phone (07) 5665 8688.



We're Here to Help!

At Yalari, our goal is to partner with you to help you develop a successful workplace giving program.

Here are a few helpful resources to share with your colleagues to inspire them to set up a regular or one-off contribution to Yalari through your Workplace Giving program.



About Yalari



Stories

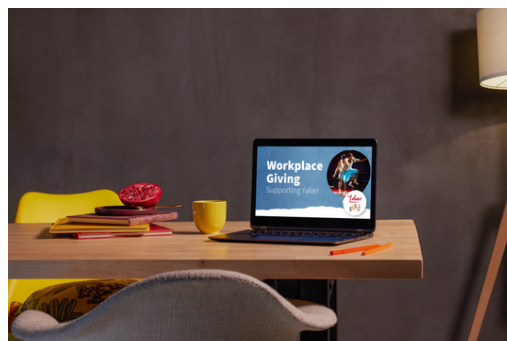


Images



Videos

Please email us at info@yalari.org if there's any ideas you might have or specific resources we can develop with your team.



Thank you!

We appreciate the growing community of businesses who are supporting Yalari through workplace giving.

auto  general

Davidson

FINDEX

 **Hall & Wilcox**
smarter law

 **HERBERT
SMITH
FREEHILLS**

 **Pinnacle**

RACV

OPTUS 

**WILSONS
ADVISORY**

“At Wilsons Advisory, we were looking for a way to get our team working collectively in a meaningful way, so workplace giving was a fantastic choice. It makes our staff proud to be working together to make a measurable, tangible difference. We feel it’s not just a donation; it’s a partnership with Yalari who are supporting Indigenous young people and leaders.”

David McCrory, Wilsons Advisory